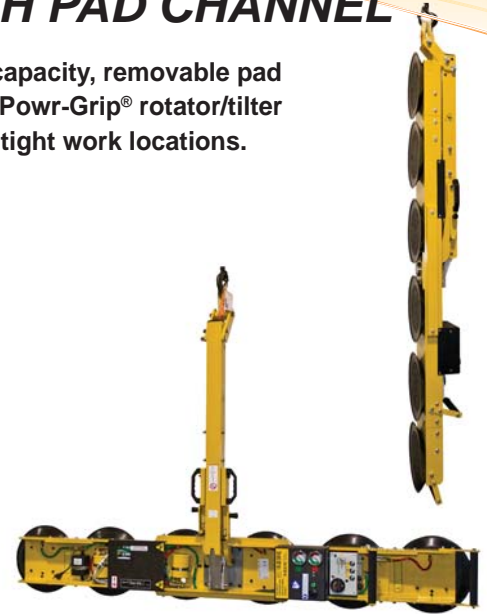
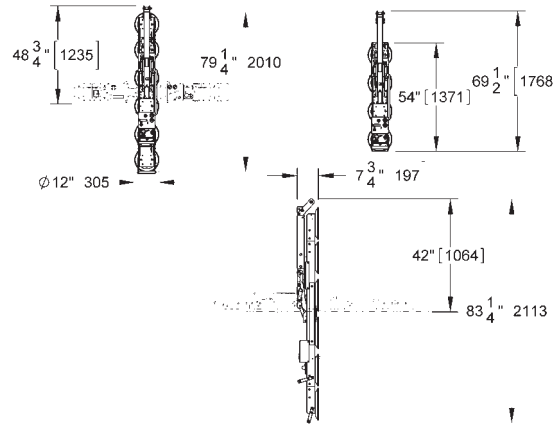
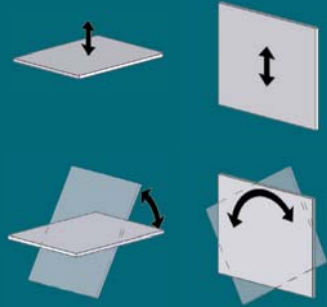


## LOW-PROFILE MANUAL ROTATOR/TILTER 1100 WITH PAD CHANNEL

With a dual vacuum system, 1100 lbs [500 kg] load capacity, removable pad frame extensions and a remarkably low profile, this Powr-Grip® rotator/tilter provides maximum versatility and ease of use in tight work locations.



**MRTALPCH611LDC**  
 1100 lbs [500 kg]



**THE ORIGINAL  
 & TRUSTED NAME  
 IN VACUUM LIFTING  
 EQUIPMENT**



908 West Main - P.O. Box 368  
 Laurel, Montana 59044 U.S.A.  
 406.628.8231 (phone)  
 406.628.8354 (fax)

**800.548.7341**  
**www.WPG.com**



Products are manufactured under an ISO 9001 quality management system

Wood's Powr-Grip products are sold through authorized dealers.

Standard Pad Spread	With 6 pads in use: 79¼" x 12" [2010 x 305 mm] With 4 pads in use: 54" x 12" [1371 x 305 mm]
Number / Size of Pads	6 / 11" [28 cm] diameter, lipped
Load Capacity (On smooth, nonporous surfaces. Please contact us for recommendations on other surfaces.)	With 6 pads in use: 1100 lbs [500 kg] With 4 pads in use: 736 lbs [334 kg]
Unit Weight	125 lbs [57 kg]
Standard Operating Power	12 volts DC, 10 amps
Load Movement	Manual rotation, 180° edgewise, with locking in 3 positions Assisted manual tilt, 90° between upright and flat, with automatic latching in upright position
Profile Thickness	7¾" [197 mm] (does not include load)
Tilt Duty	58 tilts per hour
Standard Features	Adjustable-position lift spool Dual vacuum system Low vacuum warning buzzer Green lift light On-board battery and charger Battery energy gauge Vacuum gauges Vacuum line filters Vacuum reserve tanks Spring-mounted pads Removable pad frame extensions Blow-off for quick release
Available Options	Alternative vacuum pads: 9" [23 cm] diameter vacuum pad (VPFS9) 10" [25 cm] diameter concave vacuum pad (G0750) 10" [25 cm] diameter lipped vacuum pad (HV11) (Specifications not as listed above. Please contact us for more information.) Remote control system (EO8RC1)
Design Standards (See www.WPG.com for more information.)	ASME B30.20 - 2006 (BTH-1 Design Category "B", Service Class "0") CE

Environmental conditions can affect product performance and longevity; consult the product instructions on www.WPG.com or contact a Technical Sales Representative for more information.  
 Based on product information at time of publication.